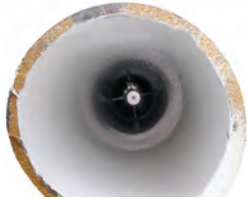


3M

3M Scotch-kote Pipe Renewal Liner 2400 helps improve water quality and service life in existing potable water pipes without the cost and community impacts of full pipe replacement. Cleaning and coating with Scotchkote Liner 2400 can improve water quality by preventing tuberculation and corrosion; increase water flow by restoring and maintaining internal pipe diameter; and reduce water loss by helping to repair cracks, pin holes and pitting. It is a trenchless solution that is spray-applied and cured in 60 minutes, often allowing pipes to be returned to service within one day. The 100 percent solids polyurea formulation contains no VOCs and is NSF/ANSI 61-certified and BPA-free. Countries in North America, Asia and Europe have approved it for contact with drinking water. It can be used in pipes between 4- and 24-in. in diameter made of a variety of materials. *Booth # 701*



AKKERMAN

For more than 40 years, Akkerman has manufactured and supported quality pipe jacking and tunneling equipment that accurately installs a variety of underground infrastructure. We offer manned pipe jacking, microtunneling, guided boring and earth pressure balance systems to address each project's specifications. We partner with contractors to explore project solutions for pipe diameters from 4 (102 mm) to 14 ft (4.3 m). Visit us at No-Dig 2015 and akkerman.com. *Booth #806*



AMERICAN AUGERS

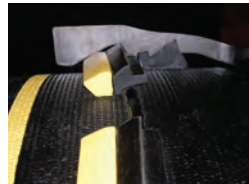
The DD-440T track-mounted horizontal directional drill from American Augers offers 440,000 lbs (200 tonnes) of thrust/pullback and continues to perform successful crossings for the pipeline industry. The advanced rotary drive includes a three pinion-and-gear drive that permits 60,000 ft-lbs (80,000 Nm) of maximum rotary torque and a rear-mounted mud swivel that provides up to 650 gpm of mud flow. Other standard features include: 10 to 18 degree drill angle, triple jaw wrench-



es with a 12-in. (305-mm) separation, wrenches that travel the full length of the thrust frame, 154,000 ft-lbs (209,400 Nm) of maximum breakout torque, 101,700 ft-lbs (138,312 Nm) of maximum makeup torque, removable wrenches for lighter transport weight, and the ability to utilize Range II drill pipe. American Augers builds the largest category of horizontal directional drills in the industry and a full range of auger boring machines. *Booth #125*

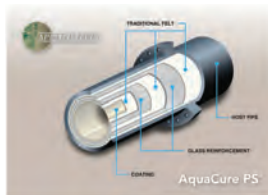
AMERICAN CAST IRON PIPE CO.

AMERICAN Cast Iron Pipe Co.'s Flex-Ring restrained joint ductile iron pipe uses the sealing features of its Fastite joint and a boltless restrained connection, providing flexible restraint against endwise separation from thrust. Easy and quick to assemble, the joint is designed for a working pressure up to 250 psi. Flex-Ring also lends itself perfectly to installations using horizontal directional drilling and pipe bursting. For more information, visit american-usa.com. *Booth #815*



APPLIED FELTS/MAXLINER

A pioneer in CIPP technology nearly 40 years ago, Applied Felts is the world's largest independent manufacturer of 100 percent vertically integrated, quality liners. Every phase of manufacturing — including a 28-stage testing system — is done in one location, ensuring confidence that Applied Felts' quality liners will stand the test of time. Applied Felts now offers its latest innovations in CIPP liner technology: AquaCure RP — a breakthrough liner that combines fiberglass reinforcement with Applied Felts' existing, best-in-class felt liner design and construction; and AquaCure PS — specially designed for pressure sewer pipes and other non-potable water applications. Visit our booth at No-Dig 2015 to also learn why MaxLiner leads the field with materials including quality felt liners that curve, stretch and accommodate up to 90-degree bends; high-performance resins that are economical and ecologically-friendly; and the best equipment and service around. Visit maxlinerusa.com or appliedfelts.com for more information. *Booth #1013*



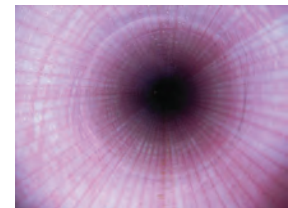
AQUA-PIPE



Aqua-Pipe is a Class IV, stand-alone structural CIPP technology used for the rehabilitation of water mains, ranging from 6 to 24 in. (150 to 600 mm) in diameter. The process is a trenchless technology, thus saving cities money in direct construction and indirect social costs. Developed by Sanexen, Aqua-Pipe is certified by NSF to NSF/ANSI standard 61. For more information on how we can help you with your water main distribution system, contact 800-263-7870, email aqua-pipe@sanexen.com. *Booth #601*

ASHIMORI INDUSTRY CO.

Attention construction business partners in the United States that are interested in the new trenchless pipe rehabilitation methods from Japan. In 1980, Ashimori Industry developed the PALTEM cured-in-place pipe relining method. It has used this technology to rehabilitate more than 1,800 miles of pipelines to date. The company is looking for licensees and contractors for its Super-HL (hose lining) structural cured-in-place pipe (CIPP) method for high-pressure water mains and its Flow-Ring structural relining system, which can be applied to a variety of pipes and conduits, from sewer and agricultural water to cable and other buried utilities. Developed in Japan, a country with high seismic activity, PALTEM's pipe rehabilitation applications are capable of negotiating deformations in host pipes and are certified earthquake countermeasures for maintaining water and air tightness. For more information, visit ashimori.co.jp/english/index.html or call 201-386-7603 to arrange advance appointments at the 2015 No-Dig Show. *Booth #631*



AVANTI INTERNATIONAL

AV-100 is an ultra-low viscosity, chemically reactive gel that is available as either granules or liquid, has similar viscosity to water and is the thinnest product on the market. AV-100 can permeate anywhere water can travel and cures within a controllable set time — anywhere from 5

seconds to ±10 hours. Once cured, AV-100 creates an effective, long-lasting water barrier while providing remarkable soil stabilization. AV-100 is used to rehabilitate and sustain municipal sanitary sewer collection systems, eliminating infiltration in manholes, sanitary and storm sewer mainlines, joints and laterals and various other underground structures by stabilizing external substrate. By eliminating infiltration, there is a reduction in excess flow to waste water treatments plants, reduced treatment costs and an extension to the life expectancy of our underground infrastructure. For more information on AV-100, visit avantigrout.com for technical specifications, FAQs, videos, case studies and animations. *Booth #416*



BAYCO PRODUCTS

Is your business using intrinsically safe lighting in confined spaces and/or hazardous environments? Nightstick recently expanded its line-up of cETLus, ATEX, IECEx and MSHA listed Intrinsically Safe Permissible penlights, flashlights, dual-light flashlights and headlamps for use in both above and below ground hazardous locations where explosive gases and dusts may be present. With more than 10 LED models, Nightstick Intrinsically Safe lighting products are quickly replacing the need for multiple safety-rated flashlights not certified to work in all conditions or hazardous environments. Take the Nightstick XPP-5422G Intrinsically Safe Dual-Light Flashlight as an example. This product features a 120 Lumen LED flashlight for distance illumination with a second 120 Lumen unfiltered LED built into the housing as a floodlight. In exclusive dual-light mode, users get both a flashlight and floodlight in one product all while being certified across all classes and all divisions, including Groups A-G. *Booth #830*



BID OCEAN INC.

BidOcean Inc. has launched a new web portal at piperehab.net, just for the pipe rehab industry. The new portal features pipe rehab bids from around the world, industry

news, a directory and classified ads. Project information includes jobs in the planning, design and bidding stage and bid tabulations for those that have already bid. For engineers, a specifications library contains specs from hundreds of pipe rehab projects. For contractors, the portal has competitive and market intelligence tools to help companies identify the best opportunities and bid better. Get more information at No-Dig 2015 or visit piperehab.net. *Booth #126*

BIT BROKERS INTERNATIONAL

Bit Brokers International introduces the VersaReam 2.0. The VersaReam is a patent-pending PDC reamer that provides versatility to the drilling industry by allowing drillers to change the size of their reamer by simply changing the blades. The VersaReam is changing the drilling industry as we know it. Not only does it bring Versatility to the driller by being able to change the size of the reamer, but it also drills up to three times faster than traditional roller cone reamers in the right formations. The VersaReam is also bi-directional, which allows HDD drillers to either push or pull ream without breaking it off the drill string. The bi-directional design also produces a much cleaner hole that allows it to be either pushed or pulled back after the ream is finished with nearly no effort by the drill rig. *Booth #532*



BUZZI UNICEM USA



Buzzi Unicem USA, a worldwide cement company and leader in rapid setting repair products for sending and receiving openings, small-hole technology and standard size utility openings. Our rapid setting repair products are designed to allow for same day restoration, reducing crew exposure to traffic dangers, expediting the opening of areas to public travel and allowing for additional jobs to be completed due to reduced labor hours per job. Our products range from rapid setting, self-mixing, self-compacting, backfill, core reinstatement grout, leak detection opening repair grout and a permanent

capping material for both asphalt and concrete roadways. All products come in cold weather versions, allowing for work to extend into cold weather seasons. *Booth #122*

C&L WATER SOLUTIONS INC.

C&L Water Solutions Inc. is a regional contracting company that specializes in water distribution, storm water and sewer collection services for utilities and municipal clients throughout Colorado and Utah. Founded in 1979 as an open-cut excavation service provider, C&L Water Solutions has since broadened its services by specializing in trenchless technologies, with industry leading experience and expertise in pipe bursting for water and sewer applications, UV cured-in-place pipe (CIPP), sliplining, lateral lining and rehabilitation, manhole rehabilitation, as well as utility and condition assessment services. The company's goal is to provide customers with prompt, reliable and courteous service combined with top quality workmanship 24 hours a day, 365 days a year. C&L Water Solutions is big enough to handle any job, and small enough to care about every job. For more information about C&L Water Solutions, visit clwsi.com. *Booth #827*



CARYLON CORP.

Since 1949, Carylons nationwide network of companies has been providing environmental maintenance services to municipalities, utilities and industries. Today, the Carylons Corp. is the largest environmental maintenance contractor in the nation. Carylons companies are known for their comprehensive array of services, professional expertise, state-of-the-art equipment and sophisticated technologies. It has been determined that private lateral services are the major source of the inflow and infiltration (I/I) entering sewer systems. One of the leading technologies being used in the industry today to correct this problem is the Lateral Connection Repair (LCR) system. Using this system, Carylons companies are able to rehabilitate service lateral connections with a full-wrap mainline CIPP product that can extend up the lateral (LCR) from 2 ft to as much as 100 ft or more Mainline to House (MTH). These services are



often used without the need or use of a cleanout. *Booth #333*

CONTECH ENGINEERED SOLUTIONS

Contech has been providing rehabilitation and relining solutions using steel and aluminum tunnel liner plate, steel and aluminum structural plate, steel reinforced polyethylene pipe, PVC liner pipe and many others for more than 70 years

CONTECH[®] ENGINEERED SOLUTIONS

— recently adding in situ manufactured spiral wound PVC and steel reinforced HDPE materials. Knowing pipe assessment, structural design and hydraulic analysis is what we do. The results? The right solution for your project needs — done right, on time and under budget. Contech Engineered Solutions is a leading provider of site solution products and services for the civil engineering industry. Contech's product portfolio includes bridges, drainage, retaining walls, sanitary sewer, stormwater, erosion control and wastewater products. To contact one of Contech's 50 offices or 300 professionals nationwide, visit conteches.com or call 800-338-1122. *Booth #1007*

CUES

CUES offers a full line of portable, truck- and trailer-mounted grout rehabilitation systems for mainline, manhole and lateral joint sealing with the latest CCTV equipment and decision support software. Contact CUES to check out our new Easy Grout computerized grouting system, which features a computerized graphical user interface that leads you intuitively through the grouting process. The software includes help files, tool tip descriptions and recommended settings to assist operators throughout the grouting process. Since the system has been designed to consolidate all the valves, electrical controls and more into a single instrumentation cabinet, it can be mounted in any location, therefore saving office space. Call 800-327-7791 for a discussion and demonstration today. More information is available at cuesinc.com or salesinfo@cuesinc.com. *Booth #816*



DITCH WITCH

With its 60,000 lbs. (267 kN) of thrust and pullback and 9,000 ft-lbs (12,200 Nm) of rotational torque, the Ditch



Witch JT60 All Terrain horizontal directional drill gives operators the flexibility of a smaller footprint drill without losing power. The machine's patented two-pipe drilling system gives more power to the bit than any other rock-drilling system in its class, enabling the JT60 All Terrain to be more productive in the widest range of ground formations. The JT60 All Terrain comes factory-equipped with the proven Ditch Witch GPS offering at no additional charge. Users can remotely view engine hours, operational hours, service reminders and various other performance criteria while gaining awareness into operator practices, idle time and service needs. For more information, visit ditchwitch.com/directional-drills/all-terrain/jt60-all-terrain. *Booth #219*

DUKE'S ROOT CONTROL

Duke's Root Control does it all, providing the best chemical root control product available, applied by the most professional crews in the industry. Razorooter II is the only diquat-based herbicide registered by the U.S. EPA for controlling nuisance tree roots in sanitary sewer line collection systems and received a classification of "evidence of non-carcinogenicity for humans" (USEPA Diquat R.E.D. Facts, July 1995). In 2014, the EPA further approved an amendment of Duke's diquat dibromide labels to lower the signal word from "warning" to "caution." Our crews insert a hose from manhole to manhole, preparing to fill the affected sewer pipe with Razorooter II. The foam is then released, compressing against pipe surfaces, penetrating cracks, joints and connecting sewers. Roots are killed on contact, decay naturally and slough away. Duke's applications prevent root-related stoppages for two to three years. We guarantee it. Visit dukes.com or call 800-447-6687. *Booth #427*



ELECTRO SCAN INC.

Electro Scan's innovative technology represents the next generation in sewer and water leak detection. Automatically finding pipe defects in sewer mains and laterals by measuring variations in electrical current through pipe walls, Electro Scan not only locates defects within 1 cm, but provides an estimated defect flow rating in GPM or LPS for each defect and for each pipe segment. In accordance with ASTM F2550-13, Electro Scan is being added to RFPs and tenders for SSES, CMOM, and CIPP certification projects. Electro Scan has gained domestic and international acceptance because of its ability to accurately, consistently, and unambiguously locate and measure defect flows. A cloud-based application, Critical Sewers, immediately stores and organizes defect data for easy access from anywhere in the world. To find out how to add Electro Scan to your existing CCTV van, RFP or tender, or to see a live demonstration, visit electroscan.com. *Booth #929*



FLOWTITE PIPE

Save money and reduce corrosion by specifying Flowtite fiberglass reinforced pipe for your next pressure or sewer project. Engineered and manufactured in the United States by Thompson Pipe Group, Flowtite FRP is corrosion-resistant and does not require linings, coatings, wraps or cathodic protection. Available in custom diameters and joint lengths,



Flowtite is durable enough to withstand trenchless installation. Thompson Pipe Group produces Flowtite in the United States and delivers it throughout North America. Contact us today to learn more about the benefits of Flowtite FRP, including: Low maintenance costs, long service life, smooth bore, wide range of sizes, flexible manufacturing process (custom diameters to provide maximum flow volumes); meets ISO, EN, ASTM and AWWA standards. Call us, (225) 658-6166, to talk about specifying your next project, or visit our website and register for an upcoming Webinar on sliplining at thompsonpipegroup.com/sliplining. *Booth# 619*

GAME CONSULTANTS

GAME Consultants is a specialized trenchless engineering firm that has one office in Port St. Lucie, Fla., and three offices in Canada; Montreal, Quebec, Ottawa, Ontario and Vancouver, British Columbia, which provide trenchless feasibility studies, specifications, contract administration and live condition assessment. Services are provided for small diameter (75 to 300mm, 4 to 12 in.) and large diameter (greater than 300 mm, greater than 12 in.) water mains. Our condition assessment tools can provide a live CCTV inspection, leak detection for all diameter pipes and a real pipe wall thickness measurement in smaller diameter pipes using technology from the United Kingdom. Since its origins in 2013, GAME has completed projects from coast to coast in both Canada and the United States. Let us take the guess work out of your pressured water mains without any interruption to your service. Contact us at info@gameconsultants.net. Booth #533



GLOBAL MACHINERY



With its adjustable 20,000 to 88,000 lbs of pulling force, the X 400 is the best Cable Burster on the market today. The X 400 has the ability to burst 1.5- to 10-in. diameter existing pipe, up to 500 ft in length. It boasts a remote control for fully automatic operation up to 480ft/hr. With its unique manhole frame, it can be operated from the surface, manhole-to-manhole or pit-to-pit. Global Machinery can provide Terra Cable Bursters up to 400,000 lbs, should your bursting job require it. Global Machinery and Terra also provide Terra-Hammer Underground Piercing Tools (moles) to customers throughout the United States. The exclusive combi-head is fast, accurate and traceable and is offered from 1.5 to 6 in. and larger. Call Global Machinery today to schedule your next rental, or demo. Booth #207

HALEY & ALDRICH

Haley & Aldrich Inc. is committed to delivering the value our clients need from their capital, operations and environmental projects. Our one-team approach for

all projects, including trenchless, allows us to draw from our 600 engineers, scientists and constructors in nearly 30 offices for creative collaboration and expert perspectives. Since our founding in 1957, we have one goal in all we do: Deliver long-term value efficiently, no matter how straightforward or complex the challenge. We provide value to our trenchless clients from design through construction because of our "design to manage risk" approach during construction. Learn more at haleyaldrich.com. Booth #429



HAMMERHEAD TRENCHLESS

The new HydroGuide HG375 winch has the highest speed pullback and payout in its class. With a maximum pressure of 3,450 psi, it delivers a pull of up to 3.75 tons, making it ideal for slitting plastic gas pipes from 1/2 to 2 in. in diameter. It is also designed for the pullback of duct, conduit or sliplining product. Infinitely proportional control can adjust payout and pullback from as little as 3 in. per minute to 195 ft per minute. The HydroGuide HG375 winch has a solid dual-capstan design driven by a dual-speed radial piston motor, powered by a 21.5 HP liquid-cooled Kubota diesel engine. Available options include a data recorder to track each pull, an all-terrain track-mounted unit and an Electrical Strike Identification system. Winch cable is offered in a variety of lengths and diameters, and downriggers are offered in 5- and 10-ft versions. Visit hammerhead-trenchless.com. Booth #225



HERRENKNECHT

The new HDD Fullface Hole Opener from Herrenknecht enables the HDD contractor to ream from pilot bore to final diameter (30 in. to 56 in.) in one step through the hardest formations. The Fullface Hole Openers can be easily and fast redressed in the field with three types of cutters for different geological conditions. The tooling can be complemented with a specially designed downhole jet-pump system (DHJP), which enables you to transport



the cuttings inside the drill pipe directly to the separation plant on the pipe site. Thereby not only the cutting sizes can be maximized, which results in an extended service life of the cutting tools, but more importantly the frac-out risk is minimized with much less requirements for the design and management of the overall mud system. Contractors using the system benefit from the savings, installation time and costs. It can become a game changer in the HDD industry. Booth #213

HOBAS PIPE USA

HOBAS pipe is suitable for virtually every installation method of new construction and replacement. The centrifugally cast, fiberglass-reinforced, polymer mortar pipe is inherently corrosion resistant and lasts 100 years or more. Leak-free, push-together joints reduce installation time and costs. Key applications are sanitary and storm sewers, corrosive environments and potable water. HOBAS benefits include superior hydraulics, high strength and long, maintenance-free service life. Because of its light weight, smaller, less expensive equipment can be used to lift large diameter 20-ft sections. Sizes range from 18 to 126 in. for both pressure and gravity applications. As many municipalities must repair their infrastructures, HOBAS pipe's high strength-to-weight ratio, smooth surface and flush joints are ideal for sliplining. Its superior hydraulic characteristics provide maximum flow recovery. Smaller installation pits and longer pushes minimize surface disruption. For more information, contact HOBAS at 800-856-7473, 281-821-2200, e-mail info@hobaspipe.com or visit hobaspipe.com. Booth #913



IMPREG

iMPREG International GmbH offers its latest innovation in advanced CIPP UV-liner solutions, the largest size yet, 63 in. (DN 1600). As with iMPREG's entire liner portfolio, this new size arrives complete, ready to install on site and is suitable for all types of sewer profiles; perfectly adapting to the most



challenging settings. The iMPREG liner portfolio, including the new size comes in either an advanced polyester or vinyl ester resin configuration, addressing today's sewer rehabilitation needs. As with all of iMPREG's liner solutions, the latest, most comprehensive equipment and accessories are part of the program. E.g. the special engineered "packer" cans, and, of course, the latest and most powerful light-train for the most efficient and professional curing process on the market. iMPREG continues to develop liner solutions to meet the demands of the expanding CIPP industry. For additional information, visit impreg.de. *Booth #329*

INFRATECH

MONOFORM Manhole Liner Forming System

MONOFORM by Infratech is an ABS interior manhole forming system that allows the pouring of new concrete walls and bases for complete rehabilitation of existing manhole structures. The new structure is designed to exceed H-20 traffic loading requirements. Restoration is completed without traffic detours, external sewage bypassing and disruption to adjacent utilities. Custom forms are available for larger structures such as lift station rehab or retrofit. Contractor and municipal inquiries are welcome. Infratech offers MONOFORM rehabilitation as a service with its own crews or can provide the forming system to be used by others. On-site training is available. *Booth #628*

INFOSENSE INC.

InfoSense is the manufacturer of the award-winning Sewer Line Rapid Assessment Tool (SL-RAT). The SL-RAT uses a patented acoustic technology that can help prioritize cleaning and CCTV operations for gravity-fed sewer lines. It conducts a blockage assessment in three minutes or less with no flow contact, which leads to productivity of 10 to 20,000 ft of pipe inspected per day, and an operating cost of \$0.05-\$0.10/ft. The SL-RAT has inspected more than 10.0 million ft of gravity-fed sewers, and was also a winner of the 2012 WEF Innovative Technology Award. Visit infosenseinc.com for more information. *Booth #625*



INFRASTRUCTURE REPAIR SYSTEMS INC.

Infrastructure Repair Systems, Inc. has been a U.S.-based manufacturer of infrastructure repair products for more than 17 years. Our IRSI CIP Point Repair System kits include premeasured scientifically formulated hot or cold weather two-part epoxy resins and prefabricated liners. Our liners have patented features and are sized exactly for the job, saving your company time and money. Our Infragard Manhole Rehab System has no VOCs, is corrosion resistant and includes both ChimCoat, providing strength and flexibility for acute temperature changes above the freeze-thaw line and Top Coat, providing strength and durability for the rest of the repair. With 30,000-plus repairs installed by our customers and zero product failures, our product specialists and certification team can help ensure your success with IRSI products. For more information, call 877-327-4216, email irsi@irsi.net or visit irsi.net. *Booth #327*



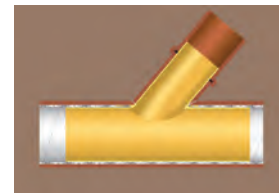
INLINER TECHNOLOGIES

Inliner Technologies, a leader in cured-in-place pipe (CIPP) renewal, introduces an ultraviolet light-cured product to complement its traditional hot water- and steam-cured CIPP processes. The UV-cured product, known as Inliner STX, combines a reinforced liner and alternative catalyst system — resulting in reduced wall thicknesses and a longer shelf life of the impregnated liner. The Inliner STX product complies with ASTM F2019 requirements and is a viable solution for pipe diameters up to 48 in. when the supply and use of water is a concern, and when a stronger reinforced material is required. Inliner has earned a reputation for unmatched integrity and quality — having installed more than 20 million ft of pipelining in the United States and Canada since 1989. In-house lining manufacturing capabilities combined with a skilled network of installers results in a quality product at competitive pricing levels. Call 812-723-0704 or visit inliner.com for more information. *Booth #717*



INTERFIT

Interfit is a full main wrap (360 degree) CIP connection seal installed from 6 to 12 in. mains during live flow using the nearest manhole without needing access to the homeowner's property. The patented, one-piece sock extends 2, 12 or 20 in. into the service line and delivers a permanent tight fitting seal that eliminates 90 percent of private source infiltration without having to line the entire lateral. By using 27-psi inflation pressure and an ambient cure process (instead of shrinkage inducing heat cures), Interfit cures without shrinking into a verifiable tight fit. Higher inflation pressures deliver superior resin migration into pipe defects, which yields superior mechanical adhesion and superior long term performance. The inflation process also yields smoother, lipless transitions than inversion processes. Interfit's ¼-in. cross sectional main line dimensional loss is approximately one-third of systems using heat cure with overlapping CIP layers and swelling gaskets. *Booth #418*



INTERPLASTIC CORP.

As a leader in the manufacture of thermoset polyester and vinyl ester resins Interplastic Corp. is continually researching, testing and developing resin systems designed specifically for the cured-in-place pipe (CIPP) market. Our newest resin systems are designed specifically for pressure pipe applications. VEX216-589 and VEX221-882 are formulated to be resilient enough to handle the demands of pressure pipe, while maintaining the strength required to repair fully or partially deteriorated pipes. Interplastic's CIPP pressure pipe resins have been designed specifically for reinforced and hybrid liners to maximize strength and longevity, yet maintain trouble-free processing. These systems have been tested according to ASTM standards. When you are in a pressure situation, call on someone you can trust. For more information, visit our website, interplastic.com or call 651-481-6860. *Booth #807*



JACK DOHENY COMPANIES

Jack Doheny Companies offers the Proteus, the pipeline inspection



industry's only battery-powered main line inspection system designed to televise 6 to 24 in. It can inspect for an entire workday without the need for an outside power source. Designed by Mini-Cam, the Proteus is feature rich and economically friendly. It features a daylight viewable computer monitor with video and reporting all in one. With the integrated observation reporting software, solid state storage drive, USB and SD card recording there is no need for an external computer or recording device and videos and data can be offloaded from the control panel. The modular design is ready for all future upgrades and the inspection cable incorporates twisted-pair conductors — smallest bend-radius, lightest weight cable available. The quick-change wheel lock has only one bolt to tighten. Quick release pan and tilt, straightview and reversing cameras available. *Booth #1012*

KEMTRON TECHNOLOGIES

KEMTRON is the leading manufacturer of effective mud recycling systems for the trenchless industry.



The Tango 600HD2 has set the standard in design and performance. Redesigned from the ground up, for 2015, KEMTRON introduces a new level of performance in mud systems. Featuring a 4,000 gal tank, inset pump pockets, HMI touch screen control panel with wi-fi capabilities, single-point shaker jacking system, high/low tank level sensors and hydraulic trailer leveling jacks, to name a few. Stop by our booth at No-Dig 2015 and see how KEMTRON maximizes your solids control and saves you time, money and the environment. *Booth #814*

LASER TECHNOLOGY INC.

Laser Technology Inc., the designer and manufacturer of the TruPulse professional-grade laser rangefinders, has introduced the highly accurate TruPulse 200X to telecom professionals. All TruPulse models measure slope distance, inclina-

tion in degrees or percent, calculate horizontal distance, vertical distance, height, 2D missing line, and can distinguish a desired target from surrounding obstructions. The TruPulse 200X is the most accurate in the line and can produce measurements with +/- 4 cm range accuracy and 0.1 degree of inclination accuracy. With the addition of waterproof housing and ability to adjust to varying light conditions using the in-scope LED display, this laser is ready for work in any environment. Use the 200X to measure change in elevation along your planned dig route and where other utilities intersect. Instantly spot check obstructions and overhang clearances to ensure safe work areas. This laser allows site data collection with the push of a button. *Booth #431*



LMK TECHNOLOGIES

LMK's T-Liner is a one-piece homogeneous main and lateral CIPP connection liner that is ASTM F2561 compliant. T-Liner has a uniform wall thickness and incorporates compressible lining material at the upstream and downstream ends creating a smooth tapered transition to the host pipe.



Both the mainline and lateral sections are formed as a structural cylinder that renews 18-in. and 360-degrees of the mainline and extends up the lateral pipe as one continuous lining. T-Liner with Insignia compression gasket-sealing technology provides a verifiable non-leaking system. These compression gaskets are embedded between the host pipe and the T-Liner and are compatible with all pipe types including polyethylene. A permanent Lateral Identification Indicia is placed on the mainline lining, which includes the building address and other pertinent information regarding the raw materials and other pertinent manufacturing details. Call 815-433-1275 or visit lmk-technologies.com/t-liner for more information. *Booth #413*

LOGIBALL

Lateral connections and laterals are getting more attention in trenchless rehabilitation projects than ever before. Groundwater does not disappear, but

in fact as more work is performed on mainline sewers and manholes,



that groundwater moves to the path of least resistance back into the collection systems through lateral connections, annular spaces in relined mains and the first few joints of the lateral that lie below the groundwater table. In order to be most effective, trenchless rehabilitation projects aimed at reducing infiltration, must include lateral connections and that portion of the lateral that is prone to leakage. Lateral sealing with chemical grout and Logiball Lateral Packers is proving to be a long-term cost-effective solution to stop infiltration at these points. Call 800-246-5988 or visit logiball.com/en, for more information. *Booth #319*

MCELROY MFG.

McElroy's next-generation DataLogger 5 and the DataLogger Vault software application work together to provide users with the most



up-to-date tools in quality assurance. DataLogger 5 allows users to quickly interpret graphic representations of the key parameters of the pipe fusion process. It is the most advanced DataLogger to date with new features including GPS tagging of joint locations, barcode scanning of pipe and fittings, a 5MP camera to photograph fusion joints and jobsite conditions and the ability to upload joint reports to the DataLogger Vault directly from the field. DataLogger Vault is a free online application that safely and securely stores fusion joint records in the cloud where they can be viewed simultaneously from multiple locations and devices. Details are easily sorted for in-depth analysis of every fusion joint from a jobsite and are accessible from anywhere there is a connection to the internet. For more information, visit mcelroy.com/datalogger. *Booth #101*

McLAUGHLIN

The McLaughlin On-Target auger boring system steering head allows con-



www.trenchlessonline.com

tractors to not only control horizontal directional changes, but also allows for lateral changes — (left to right) movement, providing more accuracy for difficult on-grade bores. The cutting path — grade and lateral movement — of the steering head is controlled by hydraulic-actuated panels that open and close to keep the head on the intended path. A control station features a hydraulic power pack to control the movement of the steering head, and a built-in water level helps monitor grade throughout the bore. Two halogen lights in the control station indicate lateral (left and right) steering head movements. As the need for oil, gas, water and sewer line installation grows, more contractors are taking a closer look at auger boring, discovering that it's a cost-efficient way to install steel casings between 12 and 70 in. (30.5 and 178 cm). *Booth #116*

MICHEL'S CORP.

Mi-Con's dewatering team provides the construction industry with efficient, economical solutions to groundwater and other fluid movement applications. Operations are spearheaded by a leadership team with hundreds of years of experience with dewatering design, in-



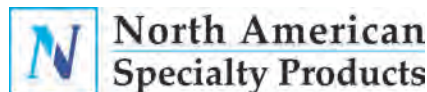
stallation, operation and management. Mi-Con is able to quickly mobilize an extensive equipment fleet and the supervision necessary for turnkey operations and around-the-clock emergency responses. Temporary and permanent dewatering solutions include wellpoint systems, drilled wells, jetted wells, educator systems and trenched and directionally drilled horizontal systems. If a situation calls for bypass services, Mi-Con will develop and execute them for sanitary, potable and natural water bodies. Additional dewatering services include slurry trench cutoff walls, slurry trench bio-walls, groundwater remediation, geotechnical drilling, relief well drilling and pumping tests. Mi-Con is a division of Michels Corporation. To learn more about how Mi-Con's dewatering services can address trenchless construction challenges. *Booth #701*

NASSCO

The National Association of Sewer Service Companies (NASSCO), is committed to setting industry standards for the assessment and rehabilitation of underground infrastructure. Pipeline cleaning and inspection are critical components to sustaining our underground infrastructure. NASSCO recently published two specification guidelines that were written to provide a comprehensive, uniform and consistent template for the procurement of pipeline cleaning and pipeline inspection. They include guidance for the successful planning, implementation and completion of a sewer cleaning and/or sewer inspection project. These specification guidelines have been prepared by the NASSCO Industry Standards Committee, which is comprised of experts in the field including contractors, owners (public and private), equipment manufacturers, operators, and engineers. Specification Guidelines supporting trenchless technologies are provided as a complimentary service at nassco.org (under specifications) and at tradeshows and conferences to continue NASSCO's steadfast commitment to assure the continued acceptance and growth of trenchless technologies through quality specifications. *Booth #632*



NORTH AMERICAN SPECIALTY PRODUCTS



To meet the growing demand for trenchless water and sewer main replacement across America, North American Specialty Products (NASP) has expanded its Certa-Lok C905/RJ product line to include 18- and 24-in. C905/RJ (Restrained Joint) incorporates the innovative Certa-Lok system that stands up to the demands placed on large diameter pipe in HDD. Certa-Lok's easy-to-assemble joints can be connected in real time as pull-back continues, eliminating costly and time-consuming fusion. Certa-Lok C905/RJ PVC pipe is made in cast-iron OD and meets all performance requirements of AWWA C905. Certa-Lok pipe uses precision-machined grooves on the pipe and in the coupling which, when aligned, allow a spline to be inserted, resulting in a

fully circumferential restrained joint that locks the pipes together. A flexible elastomeric seal (O-ring) in the coupling and provides a hydraulic seal. *Booth #1024*

PICOTE SOLUTIONS INC.

Picote introduces a drain cleaning system for cast iron drains and sewers from 1¼- to 10-in. It has been well tested over the years — Picote's own teams have cleaned more than 30 miles of sewers since 2008. The system includes a simple two-step solution for cleaning even problem drains. First, choose your powerful Picote Miller (three sizes available). Second, attach one of Picote's superior stainless steel grinding chains — Circular Cyclone for fragile pipes or the Original, an all-round general chain. The system allows fast and efficient cleaning of soft blockages, scale and calcium buildup, tree roots, concrete, lead and failed gaskets and imperfections in pipe. It has been created by a true drain cleaning and CIPP lining contractor for its own employees. It comes with world class support, as well as reduced cleaning time compared to traditional methods and a proven track record of success around the world. *Booth #1033*



PIPE MEDIC By QUAKEWRAP

With funding from the U.S. National Science Foundation awarded through a Phase I Small Business Innovative Research grant, QuakeWrap Inc. recently completed the first InfnitPipe Mobile Manufacturing Unit (MMU). The MMU shown in a recent video posted to the company's YouTube channel, is designed to build 8-in. (200-mm) diameter pipes, and the pipe shown in the video can resist over 500 psi (35 bars) internal pressure. Developed by Dr. Mo



Ehsani, president of QuakeWrap Inc. and professor emeritus of Civil Engineering at the University of Arizona, the patent-pending InfnitPipe will allow onsite manufacturing of pipes that can be miles long without any joints. The initial market targeted for Infnit-

Pipe is water transmission lines where pipes in diameters ranging from 2 to 8 ft are commonly used. InfnitPipe also presents exciting applications and opportunities for the oil and gas pipeline industries. *Booth #912*

PLASTICS PIPE INSTITUTE

The Plastics Pipe Institute Inc. (PPI) is the major trade association



representing all segments of the plastic pipe industry and is dedicated to promoting plastics as the material of choice for pipe applications. PPI is the premier technical, engineering and industry knowledge resource publishing data for use in development and design of plastic pipe systems. Additionally, PPI collaborates with industry organizations that set standards for manufacturing practices and installation methods. For more information on proper design, installation methods and maintenance for optimum service life, calculators, software, manuals and technical resources, visit our website at plasticpipe.org. *Booth #707*

PRIME CONDUIT – VYLON PIPE

Why just line your failing sewers when you can slipline them with a new Vylon Slipliner Pipe? Available in 21- to 54-in. diameters, Vylon Slipliner Pipe



can be installed in a live sewer eliminating the cost of bypass pumping, and its unique coupling design combines watertight performance with a trouble-free installation. Vylon Slipliner Pipe is a closed profile PVC sewer pipe and is manufactured in accordance with ASTM F 1803. With more than 20 years of proven performance, you can be sure of long-term reliability with Vylon Slipliner Pipe. For more information, call 800-382-0862 or visit primeconduit.com/vylon-pipe. Come by our booth to see a product sample, and let us show you some actual installation videos on projects where as much as 5,000 ft of pipe has been installed in 3.5 days. *Booth #530*.

www.trenchlessonline.com

PURE TECHNOLOGIES



Building on the proven SmartBall leak detection platform, Pure Technologies is excited to introduce its patented SmartBall Pipe Wall Assessment (PWA) tool, which can identify areas of stress in the pipe wall of metallic pipelines. Areas of the pipe wall with stress could potentially be damaged and at risk of failure, since stress can be indicative

of wall loss. With the ability to identify stress anomalies that could represent damage in addition to leaks and gas pockets, operators of critical pipeline assets are able to more effectively maintain and manage their buried infrastructure by prioritizing their renewal schedules and optimizing the use of capital. This solution provides operators with a variety of condition data on an easy-to-deploy platform with thousands of miles of proven operational experience. *Booth #315*



MAX PERFORMANCE.

Max out your capabilities with our complete CIPP solution:

- High performance resins that are economical and ecologically-friendly
- Compact equipment for laterals, verticals and hard-to-reach pipes
- Supplies, liners and resins made by the world's leading manufacturers
- Quality felt liners that curve, stretch and accommodate up to 90° bends
- Custom solutions with 4-6" transitions for any liner length or complexity

MAXLINER

WWETT BOOTH #1160



276.656.1225



maxlinerusa.com

February 2015

TRENCHLESS TECHNOLOGY 37

QUADEX

Restore deteriorated pipes, manholes, lift stations and treatment plant headworks to better than new condition with



Quadex's full line of cementitious and epoxy linings. Quadex's Composite System of structural cementitious underlayments followed by an epoxy topcoat is now the industry standard for restoring deteriorated sewer structures. Certified Applicators apply Portland, calcium aluminate or geopolymer cements to restore structural integrity and permanently stop infiltration and corrosion. In severe corrosion environments, Structure Guard 100 percent Solids Epoxy is applied to new structures or as a topcoat to cementitious underlayments on rehabilitation projects. For more information, call 870-688-7100 or visit quadexonline.com. Booth #418

RAIN FOR RENT

Rain for Rent is a leading provider of liquid handling solutions. From pumps, tanks and filtration to pipe and hoses, we provide everything needed to keep



your project on track. When you have a problem, we don't send salespeople; we send problem solvers. We're the people you call for the big jobs because no one else can do them and for the small jobs because we get them done right the first time. Rain for Rent specializes in bypass pumping including project planning, diagnosing the right pump for your project, installation and system monitoring. We take the worry off your shoulders so you can focus on your business and not on your liquid management problems. The company is known for its systems engineering expertise and ability to tackle complex jobs cost effectively, providing an exceptionally high value. We serve all 50 states, Canada and the United Kingdom from more than 65 locations. Booth #313

RAPIDVIEW IBAK

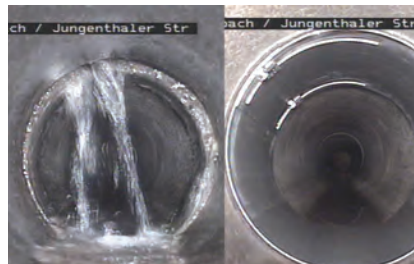
The Gator Series of cutters and grinders from RapidView IBAK North America makes pipeline maintenance easier, quicker, and more efficient than

ever. Three options are available depending on the diameter of pipeline an operator is looking to work in, with capabilities from 4 in. to more than 30 in. Special attachments even allow stable cutting operations in oval pipe. Working from only one access point, operators of the Gator Series of cutters and grinders no longer need to worry about hydraulics and/or noisy air compressors. Longer cable lengths and powerful, yet quiet cutting motors are manufactured to IBAK's exacting quality standards and can withstand the toughest jobs. The on-board, color panning camera can remotely monitor tractor position and allows extremely accurate control of the cutting tool. Booth #326



RAUSCH ELECTRONICS USA

QuickLock Point Repair is a permanent pipeline rehabilitation installation that features a 316L stainless steel sleeve encased in an EPDM rubber sleeve that is mechanically compressed against the inner pipe wall and is permanently locked in place by two locking gear mechanisms. No chemicals or resins are used in this system, so there is no cure time. QuickLock applications include sealing leaking joints, fixing cracks and holes, preventing root intrusion, and



abandoning laterals. The advantages of QuickLock over other rehabilitation and liner systems are numerous. QuickLock reinstates the structural strength of the pipe and is a permanent and reliable repair. The installation will withstand and pass internal pressure tests. Since there are no chemicals involved, the QuickLock system can be installed with flow present. The QuickLock Packer comes in several sizes to cover a range from 6 to 32 in. in diameter. For more information, call 717-709-1005 or visit rauschusa.com. Booth #733

RAVEN LINING SYSTEMS



Raven Lining Systems has a proud and rich history as a leader in the water, wastewater and manhole rehabilitation industry for more than 25 years. Raven strives to provide an undaunting level of commitment, knowing that then and only then, can they feel a level of confidence to be competitive in the industry. Raven prides itself on partnerships of the highest integrity with a solid commitment to a standard of excellence. Whether it is creating an industry-needed solution or revamping an existing product line, Raven understands that when you set high standards, then you achieve quality performance, therefore unleashing continued confidence. Raven delivers its products and solutions through a network of more than 50 trusted, certified, applicators serving customers nationwide with a combined level of experience that is unmatched in the industry. Some of Raven's signature products are the Raven 405, AquataPoxy and the Raven 750. Booth #715

RELIN AMERICA



Reline America offers installation equipment and glass-reinforced, UV-cured CIPP liners from 6 to 54 in. Liners are produced to order; in our ISO 9001:2008 manufacturing facility in Saltville, Va., in accordance with ASTM F2019; and designed according to ASTM F1216. Multiple resin and glass options are available to meet various wastewater, stormwater, industrial pipe and culvert rehabilitation requirements. Utility contractors are certified to install the liners and rental equipment is available for training during a contractor's first pipe rehabilitation projects. Nearing 2 million If installed across North America, Reline's UV CIPP liners are preferred for their unparalleled "as-manufactured" and "as-built" quality and consistency. The need for pipe rehabilitation is growing and UV CIPP is a significant new market opportunity. In Europe, UV CIPP is reported to have grown from 20 to 70 percent market share over the last five years as it has displaced legacy alternative technologies. Booth #525

RHINOTRADERS

Tim Coss founded Rhinotraders after 30 years of experience in the tunneling industry. His time spent as president of Microtunneling Inc. and a director of the Microtunneling Short Course at the Colorado School of Mines has given him the opportunity to develop a large international contact base. Utilizing this contact base, Coss's vision is to bring buyers and sellers together on a global scale supporting continued industry growth worldwide. Entering into its second year, Rhinotraders offers numerous machines from various manufacturers to contractors worldwide. Utilizing a network of contacts Rhinotraders works to broker the sale of existing equipment as well as assist in sourcing any required ancillary equipment. If you have a machine you would like to market or a specific need, let Rhinotraders be your resource in the global marketplace. *Booth #824*



plementation of trenchless technology for the public interest throughout the states of Colorado, Utah, and Wyoming. The mission of the Chapter is to advance the goals of the national NASTT organization, increasing education and awareness of tunneling and trenchless technologies for rehabilitation of existing pipelines and construction of new pipelines and infrastructure within the Rocky Mountain region. The Chapter hosts a number of regional trenchless events every year including project

site visits, field demonstrations, educational seminars, and will be holding its annual conference in November 2015 in the Denver metro area. For more information about RMNASTT and upcoming events, visit rmnastt.org. *Booth #826*



THE ROBBINS CO.



Robbins small boring units (SBUs) provide the most time and cost effective way to bore through difficult ground for utility installation projects. Now available from 30 to 48 in., the smaller diameter SBU-M is the optimal solution for line and grade critical utility tunneling in both hard and mixed ground conditions. The unique machine can be combined with auger boring machines or any standard pipe jacking unit. Both the new smaller diameter SBU-M and the Robbins original SBU-M, available from 48 to 78 in., allow for line and grade control within 1 in. for bores up to 500 ft, and feature laser-guided steering and easy access to the cutterhead for cutter changes and obstruction removal. To find out if Robbins small diameter tunneling machines are the right solutions for your next project, visit therobbinscompany.com, or call 440-248-3303. *Booth # 617*

ROCKY MOUNTAIN NASTT

The Rocky Mountain Chapter of the North American Society for Trenchless Technology (NASTT) was formed in 2009, to promote the education and im-

www.trenchlessonline.com

Let There Be Light. UV Light.

We didn't invent light, but we are mastering innovative ways to use it.

Inliner Technologies is now uniquely positioned to offer a proven ultraviolet light-cured option in addition to our experienced line of water- and steam-cured CIPP products.

inliner
REINFORCED UV-CURED LINER **STX**

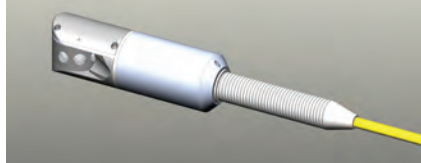
Introducing **Inliner STX**
Reinforced UV-cured Liner.

www.inliner.com
© 2015 Inliner Technologies

inliner
technologies

R.S. TECHNICAL SERVICES

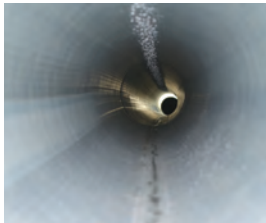
The RodSTAR, from R.S. Technical, is the newest in its line of inspection cameras. The RodSTAR is an auto-upright pan and tilt camera designed for use with RST 1500 Series Push Systems to provide greater functionality and enhanced inspection data gathering for lateral inspections from the main such as inflow and infiltration assessment of the laterals and joint condition.



Alignment of the camera to deploy into the lateral from the main is also made quicker and easier for the operator. Features include a newly engineered sonde system capable of emitting a range of frequencies at higher power levels than previous models available, humidity and temperature sensors and on-screen display. *Booth #119*

RS TECHNIK

RS Technik presents RS BlueLine, certified through NSF International to NSF/ANSI 61. This glass reinforced CIPP liner made with Dow Technology is your solution for pressure pipe requiring structural renewal from 6- to 48-in. diameter. High performance design offers a solution that stops water loss, improves hydraulics and water quality while renewing the structural integrity of



your water distribution and transmission mains. For more than 15 years, RS Technik has provided a comprehensive suite of pipe rehabilitation solutions including: RS CityLiner a cost-effective, styrene-free CIPP solution for gravity sewer and storm-water applications. RS MaxPatch a safe, proven CIPP system used to renew short sections of sewer pipelines. *Booth #200*

SAUEREISEN

Sauereisen SewerGard No. 210X is a protective lining specifically formulated for municipal wastewater environments. SewerGard No. 210X provides a chemical-resistant barrier for concrete, masonry, brick and steel substrates. SewerGard™ No. 210X has the ability to build up to 125 mils in a single coat and offers strengths in excess of 15,000 psi. As a 100 percent solids epoxy polymer, No. 210X is specified to protect infrastructure throughout the wastewater industry. SewerGard No. 210X is resistant to hydrogen sulfide and sulfuric acid, suitable as 80 to 125 mil lining, moisture tolerant and has zero VOCs. *Booth #919*



SEKISUI NORDI-TUBE

SEKISUI SPR Americas patented, certified and proven glassfiber-reinforced CIPP liners for the trenchless rehabilitation of pressure pipelines in-



cluding water, gas and sewer force main piping networks – providing solutions that are high quality, cost-effective and environmentally friendly. NordiPipe for potable water, supply, irrigation and fire main networks is NSF 61 certified, Class III and IV fully structural solutions. NordiForce designed for force mains, industrial pipelines and chemical-resistant solutions. TubeTex is designed for gas, water and industrial supply networks. *Booth #1032*

SEKISUI SPR AMERICA



Deteriorated gravity networks can be renewed with spiral-wound pipe methods. The innovative spiral-wound SPR, SPR EX or SPR PE products from SEKISUI SPR Americas are designed for the rehabilitation of small to large diameter pipes (8 to more than 144 in.) in circular, non-circular and custom shapes. SPR is a spiral wound technology for the rehabilitation of large-diameter pipelines up to 217 in. Circular, non-circular and even custom shapes can be rehabilitated. SPR PE, developed in 2005, is a unique, steel-reinforced, high-density-polyethylene liner. The structurally lightweight liner serves diameters from 36 to 120 in. SPR EX is a full structural liner, strong and lightweight at the same time, handling the smallest diameters in the spiral wound product range, from 8 to 42 in. *Booth #1032*

SEWER EQUIPMENT CO.

The HX-12 from Ramvac by Sewer Equipment, brings all of the RAMVAC ad-



INSPECTION
DREAM
MACHINES

conductor
THE SINGLE SOLUTION

From mainlines to laterals, stormdrains to easements and offroad access, let us create the optimum mobile inspection vehicle or portable system to meet all your application requirements.

Call Us Today to Schedule Your
FREE Product Demonstration!

RS Technical Services Inc.
Design and Manufacture of Video Pipeline Inspection Systems

CAMERAS | SYSTEMS | VEHICLES | SOFTWARE

800.767.1974
rstechserv.com
sales.info@rstechserv.com



HIGH CUBE
SPRINTER
VANS
TRAILERS
ATVS
THE CUBE
PRIVATE EYE

vantages to you in a conventionally sized hydro excavator. The HX-12 features a 12-yd debris tank for when you can't leave



a big job to unload the material. HX-12 features the industry's only temperature controlled environmental chamber and a directional discharge system so you can off load your debris back into the excavation site when you are done, without the mess of dumping your tank. The HX-12 features a long-range wireless remote, NEMA 4 electrical system, a 400,000-BTU water boiler and a three-stage cyclonic filtration system. The standard 3,000-CFM blower match the performance of larger blower machines while delivering class leading fuel economy. Also available with an air excavation system for when you can't risk adding water to the problem area. *Booth #124*

TRENCHLESS TECHNOLOGY CENTER (TTC)

Since 1991, the Trenchless Technology Center (TTC) at Louisiana Tech University has been working to develop its role in support of the development of trenchless technologies and the more effective installation and management of the nation's buried infrastructure. Early projects tended to focus on improving the understanding and design of the core trenchless technologies and to support the various associations that were providing information to municipalities and other utility owners to encourage them to adopt the latest technologies. TTC now has a more active role as an innovation engine for the industry coupled with a continued quest to understand the fundamental performance issues associated with various trenchless methods. The Center has also become increasingly active in promoting buried asset management and trenchless product evaluations and validations. *Booth #129*



TRIC TOOLS INC.

TRIC Tools Inc. invented and patented the first sewer lateral pipebursting system, opening the market for trenchless home sewer replacement. Shown here is the new TRIC X30 pipebursting system, our greatest value to date for

replacing sewers and other pipes up to 6 in. in diameter. The latest addition to this winning formula is the



Hi-Flow 13-hp power pack (green machine in photo), which makes the X30 pull two or even three times as fast as previous hydraulic pumps, allowing contractors to finish longer jobs in record time. *Booth #133*

TRY TEK

TRY TEK Machine Works Inc. is announces the availability of the new Trydent 80 Small Pipe Cutting System. The TRYDENT 80 allows reinstatement of interior or exterior relined pipes from 3 to 6 in. (80 mm to 150 mm) in diameter. You can access pipe systems through clean-out ports or rooftop vent pipes. This noninvasive method of repairing damaged pipe is faster and less costly than demolition and pipe replacement. Any building where tenants or operations

DIG SMART. DIG SAFE.



- SAFER
- VERSATILE
- EASY OPERATION

- SIMPLE MAINTENANCE
- MAXIMUM EFFICIENCY
- GLOBAL SALES & SUPPORT

800.752.2400 ▪ 740.374.2306 ▪ www.X-Vac.com



X-VAC
HYDRO EXCAVATOR
A Product of Hi-Vac® Corporation

cannot be disturbed is an ideal prospect. Reinstall an entire vertical waste pipe from a single access point. Small, powerful cutting head can maneuver around 90 and 45-degree elbows. Navigate multiple bends and turns. Reach extends up to 100 ft. Booth #433



specially designed bladed cutter head to make replacing ductile iron and steel pipe possible. Grundocrack pneumatic Pipebursting tools range in size from 5- to 32-in. in diameter. Pneumatic Grundocrack systems replace pipes from 4- to 54-in. in diameter. The Grundomat horizontal boring tool from TT Technologies is ideal for water and sewer service and lateral installations. TT Technologies also offers a wide range of horizontal boring, pipe ramming and pipebursting accessories, as well as a wide range of pipebursting expanders, constant tension winches and bentonite lubrication systems. Booth #401

TT TECHNOLOGIES

TT Technologies offers 16 models of the Grundoram pipe ramming



tools for trenchless casing installations from 4- to 122-in. in diameter, with diameters up to 147 in. and larger possible. The large diameter inventory now covers direct connections to 108- and 120-in. steel pipe, the most extensive ram gear inventory available, in-stock, for rent or purchase. The Grundoburst static Pipebursting system utilizes a

TULSA RIG IRON



Tulsa Rig Iron introduces its newest model of mud recycling systems, the MCS-425. This system offers up to 400-gpm normal and 500-gpm max cleaning volumes. Featuring a 4,900-gal, three-compartment tank, six 5-in. desilting hydrocyclones, one 10-in. desanding hydrocyclone, one three-panel

linear motion scalping shaker, one five-panel linear motion combo shaker, and triple tandem axles, this powerhouse delivers. Its compact footprint is perfect for jobsites with limited space. The system also features its new phenolic-lined tank interior to minimize corrosion. No gimmicks, only quality and performance. For more information on their entire product lineup, visit tulsarigiron.com. Booth #915

UNDERGROUND SOLUTIONS

Underground Solutions Inc. (UGSI) provides infrastructure technologies for water, wastewater and power cable conduit applications. UGSI's



Fusible PVC pipe products, including Fusible C-900, Fusible C-905 and FPVC, use patented technology to produce a

Go beyond the surface. | millerpipeline.com

COME SEE US AT WWETT!
BOOTH #3020

Sometimes it's what you **CAN'T SEE** that **MATTERS MOST**

THESE HANDS HAVE REHABILITATED OVER 2 MILLION FEET OF PIPELINE AND HOLD THE POWER TO PROTECT THE FUTURE OF OUR AGING INFRASTRUCTURE

Miller Pipeline
pipeline construction & rehabilitation

Miller Pipeline employees are the quintessential construction specialists in the underground industry. With our broad knowledge and hands-on approach you're bound to get more than you bargained for.

fused monolithic, fully-restrained, gasket-free, leak-free piping system ideal for trenchless (horizontal directional drilling, pipe bursting and sliplining) or conventional open-cut installations and are available in 4- to 36-in. diameters. The combination of standard fittings and lower weight with higher flow for a given pressure class versus other thermoplastic pipe ensures that Fusible PVC pipe brings greater economy to most pipeline projects. *Booth #301*

UNDERGROUND TOOLS INC.

Underground Tools Inc. (UTI) will be displaying its line of premium quality directional drilling pipe and HDD tooling at No-Dig 2015. UTI's comprehensive line of HDD down-hole tooling features improved designs and includes drive chucks, starter rods, reamers, sonde housings, pilot bits, carriage chain and more. UTI offers drill pipe for nearly every make and model of drill rig. UTI's drill pipe is readily available, and made from top quality materials, with careful consideration given to precise threaded connections. *Booth #832*



VERMEER

The new D20x22 S3 Navigator HDD is a small footprint machine yet one that is able to increase productivity when working in urban or tight jobsites. A 74-hp



Deutz engine powers the machine and is capable of 12 percent greater power compared to its predecessor, the D16x20 Series II. The D20x22 S3 features 19,550 pounds of thrust/pullback with 2,250 ft-lb of torque. The D20x22 S3 has a faster carriage speed, which can lead to an increased amount of product installed per minute. The 167 ft (50.9 m) per minute

now exceeds competitive models in the same class. The D20x22 S3 features the common control system currently used on larger Vermeer drills. The system features a digital display and improved on-board diagnostics, which allow operators to customize the available drill information. *Booth #201*

WYO-BEN

Since Wyo-Ben Inc. introduced TRU-BORE in 1992, it has been the industry leader in horizontal directional drilling

fluids. It is a highly concentrated bentonite based drilling fluid, which is extremely effective in difficult drilling situations from clay soils to sands and gravels. NSF certified, TRU-BORE is the best risk management tool available. *Booth #215*



SEWPERCOAT®

Calcium Aluminate Cement

100% Calcium Aluminate Cement

Ordinary Portland Cement

+

Natural Sand

100% Calcium Aluminate Aggregates

Natural Sand

=

100% CA SEWPERCOAT®

There's only one winning combination... Why gamble?

Choose SewperCoat®!



Many products in the market now claim to be 100% calcium aluminate, when in fact they are not. Only SewperCoat® is the proven 100% calcium aluminate solution (both the cement and the aggregates are calcium aluminate), with decades of worldwide performance in the harshest sewer environments.

If that isn't enough, SewperCoat® is also backed by a no-nonsense 10-year labor and materials replacement warranty.

With SewperCoat® on the job, there's one less thing to worry about.

Call us for more information:
1-800-524-8463



www.sewpercoat.com


available... Applicators and Reps needed... Attractive areas available... Applicators